

**COMMITTEE ON PREPARATORY EDUCATION
REPORT TO THE RIVERSIDE DIVISION
DECEMBER 4, 2018**

To be received and placed on file:

Report on the Entry-Level Writing Requirement: 2017-2018

In the fall of 2017, 62% of UCR's entering freshmen had satisfied the Entry-Level Writing Requirement before registering as full-time students. Many students passed the AWPE or the AP English exam, or took summer school. A large number of freshmen (32% in Fall 2017) came to UCR with AP credits that placed them in English 1B or 1C.

The remaining 38% placed in Entry-Level Writing courses. The great majority made good progress once they arrived at UCR.

2017 ELWR Students: Initial Placement

Colleges	English 1PA	English 4	Basic Writing 1 & 3 (ESL)	Total ELWR Students
BCOE	48	73	13	134
CNAS	84	404	101	589
CHASS	67	760	184	1011
GSOE	0	2	1	3
TOTAL	199	1239	299	1737

Of the 1239 students who placed into English Writing 4 in the fall, only seven were required to leave UCR at the end of the year solely for failure to satisfy the requirement. Two additional students were required to leave UCR because they never took the Analytical Writing Placement Exam. Of the 55 remaining students initially placed in English 4 who did not satisfy the ELWR by the spring 2018 quarter, 35 were academically dismissed or left the university due to impending dismissal because of their overall academic records. Seven students withdrew voluntarily from the university. Six students satisfied the ELWR during the summer 2018 quarter. One student's associate dean granted an additional quarter to satisfy the ELWR. Eleven students have time remaining in the ELWR time-limit because they withdrew from UCR for one or more quarters.

There were 199 additional students who placed into English Writing 4 in the fall and were invited to participate in English 1PA (Beginning Composition: Intensive). 166 of these students took and passed English 1PA to satisfy the ELWR and ENGL001A in the fall quarter. Twenty-seven students satisfied the ELWR by passing English 4. The remaining 6 students left the university before completing the ELWR.

A total of 299 entering freshmen initially placed in ESL classes. Since they were "off the clock" for up to their first three quarters of residence, no students among those placed in ESL classes in the fall of 2017 were required to leave UCR solely for failure to satisfy the ELWR. 154 ESL students satisfied the ELWR during their first year of residence. Of the remaining 145 ESL students, 4 satisfied the requirement during the summer of 2018. 119 continue to make progress in satisfying the ELWR. (They will have up

to two years to satisfy the ELWR.) Fifteen students have been academically dismissed or have left the university due to impending dismissal because of their overall academic records. Seven students have withdrawn voluntarily from the university.

Update on Fall 2016 Basic Writing 1 and 3 Students

We have a more complete picture of BW 1 and BW3 students' progress when we look at the two-year records of students who placed in an ESL course when they entered UCR in the fall of **2016**. That year UCR admitted by far its largest freshman class. Of the 426 entering freshmen who were placed in ESL classes that year, 257 students satisfied the ELWR during their first year of residence. 96 students satisfied the ELWR during their second year of residence. Eleven students satisfied during the summer 2018 quarter. Of the remaining 62 ESL students, 35 students were academically dismissed or left the university due to impending dismissal on the basis of their overall records. Three students withdrew from the university. **14 students in the ESL group that started in Fall 2016 were eventually required to leave UCR solely for failure to satisfy the ELWR.** Seven students have time remaining in the ELWR time-limit because they withdrew from UCR for one or more quarters. In previous years, almost half of the ELWR-lapsed students were able to complete the requirement through UCRX and be re-admitted to UCR. We expect a similar result for this group.

2016 Basic Writing 1 & 3 (ESL) Admits Not Satisfying ELWR (listed according to initial placement)

Colleges	Total Basic Writing 1 & 3 (ESL) Students	Total BSWT 1 & 3 (ESL) Students; ELWR not satisfied	Academically Dismissed or Withdrew	Withdrew (in good standing)	ELWR Lapse	Time Remains
BCOE	30	4	2	0	0	2
CNAS	137	16	11	1	0	3
CHASS	259	42	22	2	14	2
TOTAL	426	62	35	3	14	7

IN PROGRESS: 2017 Admits Not Satisfying ELWR by end of Spring 2018 (listed according to initial placement)

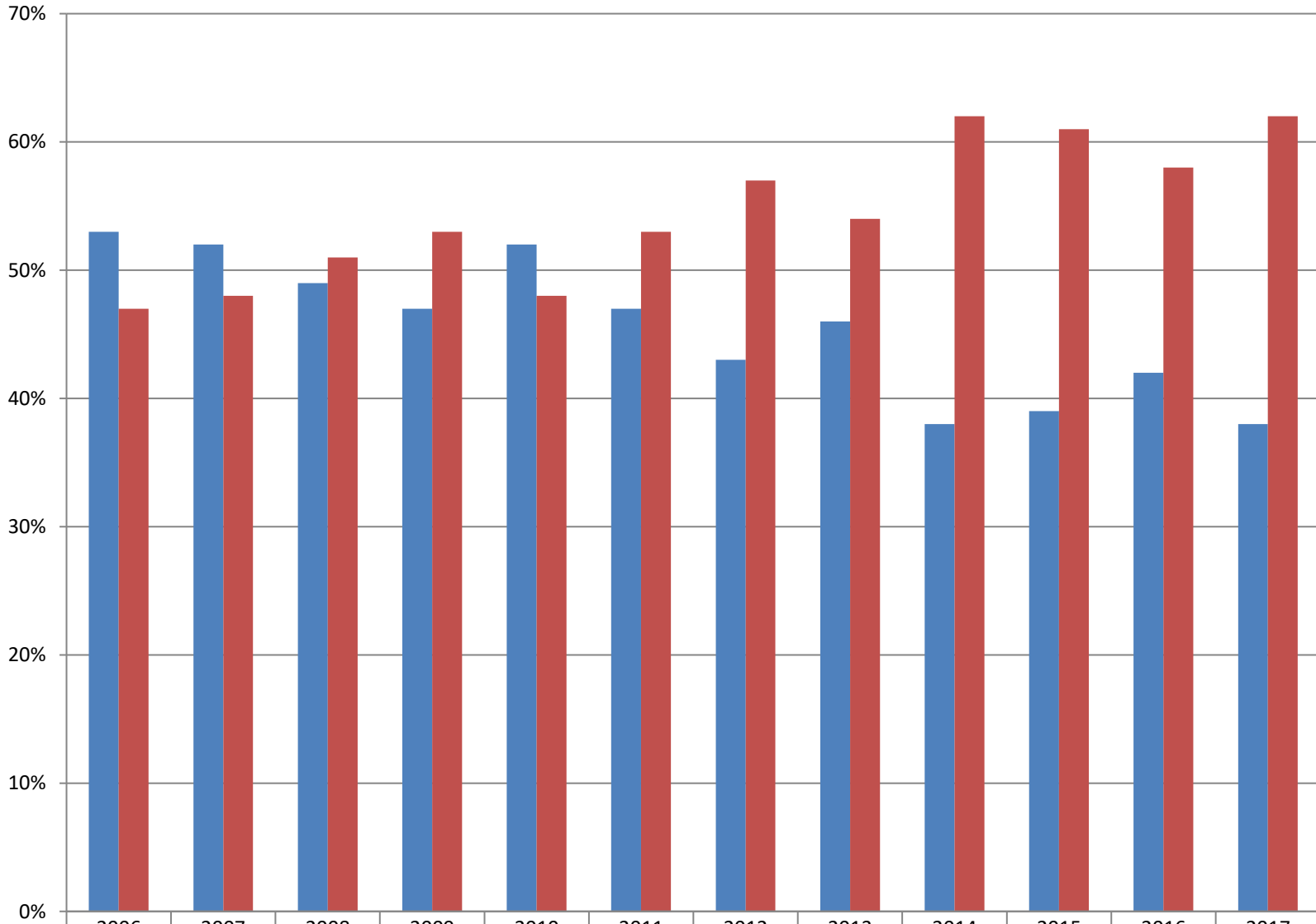
Colleges	Total ELWR Students	ELWR Students Not Satisfying ELWR by end of Spring 2018	English 1PA; ELWR not satisfied	English 4; ELWR not satisfied	BSWT 1 & 3 (ESL); ELWR not satisfied
BCOE	134	9	1	4	4
CNAS	589	59	3	13	43
CHASS	1011	149	2	50	97
GSOE	3	1	0	0	1
TOTAL	1737	218	6	67	145

Colleges	Total 2017 English 4/1PA Students	2017 ENGL 4/1PA Students; ELWR not satisfied	Satisfied ELWR during 18U	Academically Dismissed or Withdrew	Withdrew (in good standing)	ELWR Lapse	Time Remains
BCOE	121	5	0	2	1	1	0
CNAS	488	13	3	5	1	0	4
CHASS	827	51*	3	28	5	8*	8
GSOE	2	0	0	0			0
TOTAL	1438	69*	6	35	7	9*	12

Colleges	Total 2017 Basic Writing 1 & 3 (ESL) Students	2017 BSWT 1 & 3 (ESL) Students; ELWR not satisfied	Satisfied ELWR during 18U	Academically Dismissed or Withdrew	Withdrew (in good standing)	ELWR Lapse	Time Remains
BCOE	13	4	0	0	1	0	3
CNAS	101	40	3	2	2	0	36
CHASS	184	96	1	14	3	0	79
GSOE	1	1		0	0		1
TOTAL	299	141	4	16	6	0	119

*Two students never took the AWPE in order to satisfy the ELWR or receive the proper placement.

UCR ELWR Status of New Freshmen

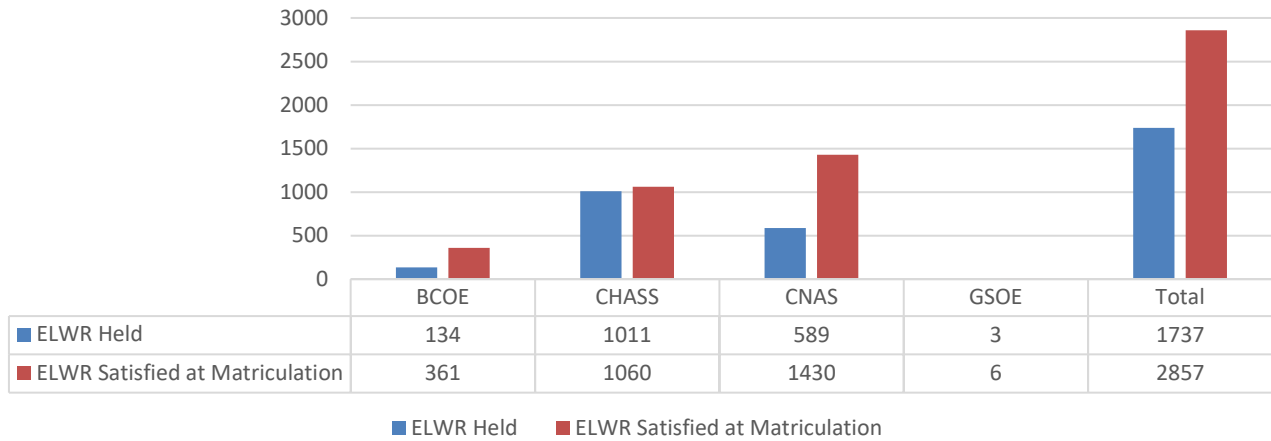


■ ELWR Held	53%	52%	49%	47%	52%	47%	43%	46%	38%	39%	42%	38%
■ ELWR Satisfied	47%	48%	51%	53%	48%	53%	57%	54%	62%	61%	58%	62%

■ *ELWR Held* ■ *ELWR Satisfied*

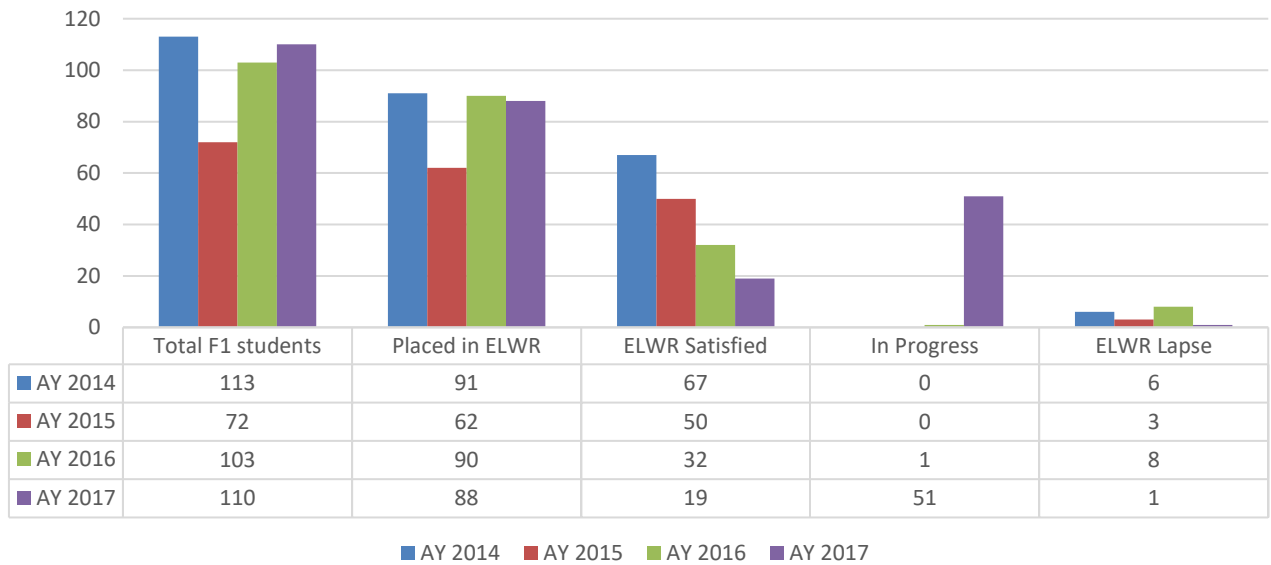
ELWR Status by College

2017-2018



■ ELWR Held ■ ELWR Satisfied at Matriculation

F1 Visa Students' Progress in ELWR



■ AY 2014 ■ AY 2015 ■ AY 2016 ■ AY 2017

	Total F1 students	Placed in ELWR	ELWR Satisfied	% of F1 ELWR currently satisfied	In Progress	Academically Dismissed or Withdrew	Withdrew (in good standing)	ELWR Lapse
AY 2014	113	91	67	74%	0	10	8	6
AY 2015	72	62	50	81%	0	2	6	3
AY 2016	103	90	32	70%	1	9	0	8
AY 2017	110*	88*	19	39%	51	9	3	1

*Three F1 students left the university before receiving an official placement.