

**COMMITTEE ON PREPARATORY EDUCATION
REPORT TO THE RIVERSIDE DIVISION
DECEMBER 3, 2019**

To be received and placed on file:

Report on the Entry-Level Writing Requirement: 2018-2019

In the fall of 2018, 59% of UCR's entering freshmen had satisfied the Entry-Level Writing Requirement before registering as full-time students. Many students passed the AWPE or the AP English exam, or took summer school. A large number of freshmen (33% in Fall 2018) came to UCR with AP credits that placed them in English 1B or 1C. Another 15% of the entering freshmen satisfied the ELWR by passing the Analytical Writing Placement Exam. The remaining 11% of entering freshmen satisfied the ELWR by way of the SAT (4%), the ACT (1%), an International Baccalaureate English exam (1%), earning transferable credit for English 1A from another institution (3%), or passing English 4 during the Highlander Early Start Academy (2%).

The remaining 41% placed in Entry-Level Writing courses. The great majority made good progress once they arrived at UCR.

2018 ELWR Students: Initial Placement

Colleges	English 1PA	English 4	Basic Writing 1 & 3 (ESL)	Total ELWR Students
BCOE	36	64	14	115
CNAS	113	433	83	629
CHASS	81	845	180	1106
GSOE	1	27	11	39
SPP	0	11	2	13
TOTAL	231	1380	291	1902

Of the 1380 students who placed into English Writing 4 in the fall, only thirteen were required to leave UCR at the end of the year solely for failure to satisfy the requirement. One additional student was required to leave UCR because they never took the Analytical Writing Placement Exam. Of the 62 remaining students initially placed in English 4 who did not satisfy the ELWR by the spring 2019 quarter, 42 were academically dismissed or left the university due to impending dismissal because of their overall academic records. Four students withdrew voluntarily from the university. Ten students satisfied the ELWR during the summer 2019 quarter. Two students' associate dean granted an additional quarter to satisfy the ELWR. Four students have time remaining in the ELWR time-limit because they withdrew from UCR for one or more quarters.

There were 231 additional students who placed into English Writing 4 in the fall and were invited to participate in English 1PA (Beginning Composition: Intensive). 185 of these students took and passed English 1PA to satisfy the ELWR and ENGL001A in the fall quarter. Forty-three students satisfied the ELWR by passing English 4. The remaining 3 students left the university before completing the ELWR.

A total of 291 entering freshmen initially placed in ESL classes. Since they were “off the clock” for up to their first three quarters of residence, no students among those placed in ESL classes in the fall of 2018 were required to leave UCR solely for failure to satisfy the ELWR. 147 ESL students satisfied the ELWR during their first year of residence. Of the remaining 144 ESL students, 5 satisfied the requirement during the summer of 2019. 115 continue to make progress in satisfying the ELWR. (They will have up to two years to satisfy the ELWR.) Twenty-one students have been academically dismissed or have left the university due to impending dismissal because of their overall academic records. Three students have withdrawn voluntarily from the university.

Update on Fall 2017 Basic Writing 1 and 3 Students

We have a more complete picture of BW 1 and BW3 students’ progress when we look at the two-year records of students who placed in an ESL course when they entered UCR in the fall of **2017**. Of the 299 entering freshmen who were placed in ESL classes that year, 158 students satisfied the ELWR during their first year of residence. 80 students satisfied the ELWR during their second year of residence. Two students satisfied during the summer 2019 quarter. Of the remaining 59 ESL students, 25 students were academically dismissed or left the university due to impending dismissal on the basis of their overall records. Six students withdrew from the university. **24 students in the ESL group that started in Fall 2017 were eventually required to leave UCR solely for failure to satisfy the ELWR.** Five of these ELWR-lapsed students have already been able to complete the requirement through UCRX and been re-admitted to UCR. In previous years, almost half of the ELWR-lapsed students were able to complete the requirement through UCRX and be re-admitted to UCR. We expect a similar result for this group. Four students have time remaining in the ELWR time-limit because they withdrew from UCR for one or more quarters.

2017 Basic Writing 1 & 3 (ESL) Admits Not Satisfying ELWR (listed according to initial placement)

Colleges	Total Basic Writing 1 & 3 (ESL) Students	Total BSWT 1 & 3 (ESL) Students; ELWR not satisfied	Academically Dismissed or Withdrew	Withdrew (in good standing)	ELWR Lapse	ELWR Lapse - Readmitted	Time Remains
BCOE	13	3	0	1	0	0	2
CNAS	101	15	8	2	4	1	0
CHASS	184	40	17	3	14	4	2
GSOE	1	1	0	0	1	0	0
TOTAL	299	59	25	6	19	5	4

IN PROGRESS: 2018 Admits Not Satisfying ELWR by end of Spring 2019 (listed according to initial placement)

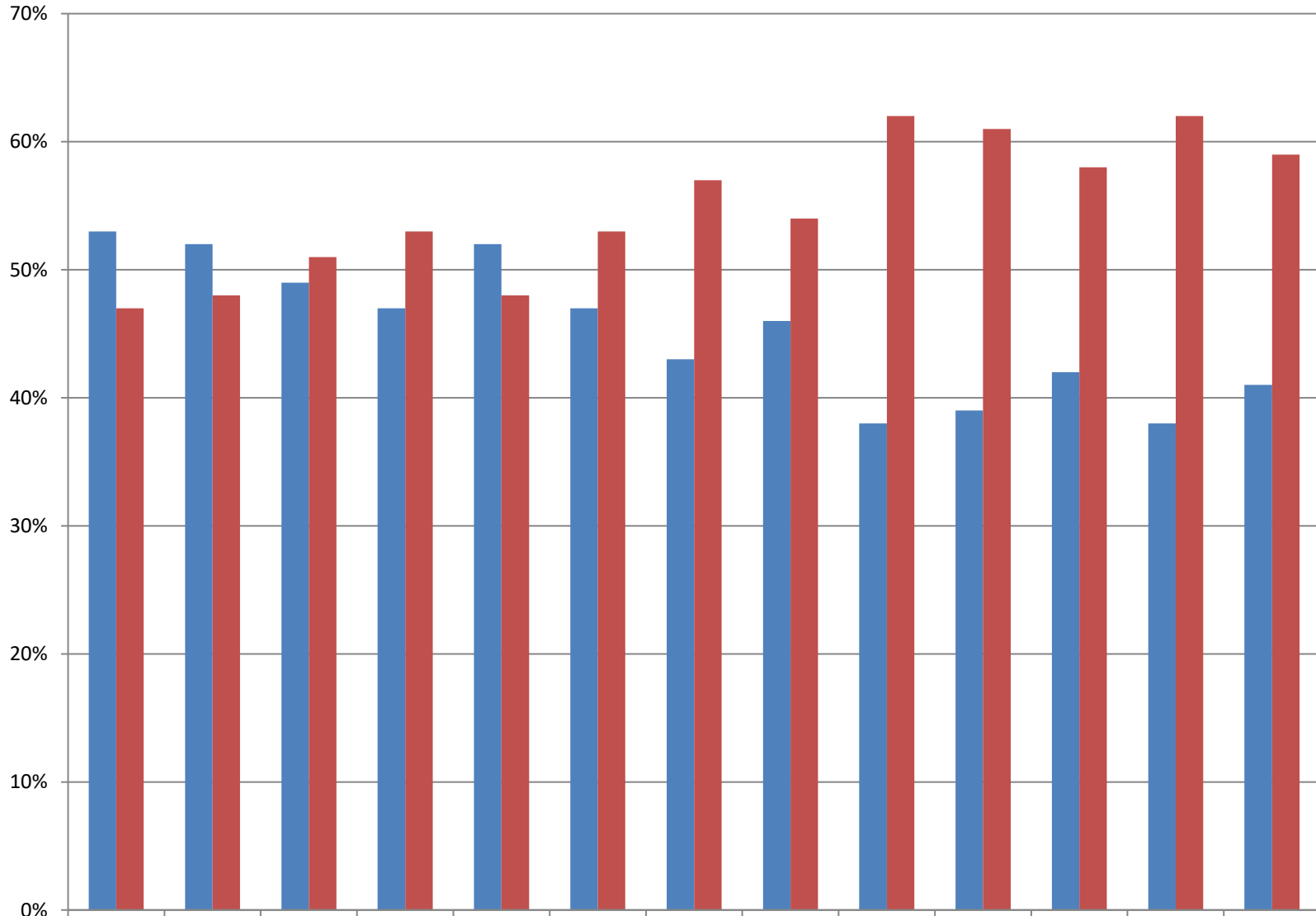
Colleges	Total ELWR Students	ELWR Students Not Satisfying ELWR by end of Spring 2019	English 1PA; ELWR not satisfied	English 4; ELWR not satisfied	BSWT 1 & 3 (ESL); ELWR not satisfied
BCOE	115	6	0	3	3
CNAS	629	48	1	17	30
CHASS	1106	164*	2	54	107
GSOE	39	5	0	1	4
SPP	13	0	0	0	0
TOTAL	1902	223*	3	75	144

Colleges	Total 2018 English 4/1PA Students	2018 ENGL 4/1PA Students; ELWR not satisfied	Satisfied ELWR during 19U	Academically Dismissed or Withdrew	Withdrew (in good standing)	ELWR Lapse	Time Remains
BCOE	100	3	0	2	0	1	0
CNAS	546	19	2	9	1	3	4
CHASS	926	56*	8	33	3	10*	2
GSOE	28	01	0	1	0	0	0
SPP	11	0	0	0	0	0	0
TOTAL	1611	79*	10	45	4	14*	6

Colleges	Total 2018 Basic Writing 1 & 3 (ESL) Students	2018 BSWT 1 & 3 (ESL) Students; ELWR not satisfied	Satisfied ELWR during 19U	Academically Dismissed or Withdrew	Withdrew (in good standing)	ELWR Lapse	Time Remains
BCOE	15	3	0	1	0	0	2
CNAS	83	30	5	8	0	0	17
CHASS	180	107	0	25	3	0	79
GSOE	11	4	0	0	0	0	4
SPP	2	0	0	0	0	0	0
TOTAL	291	144	5	34	3	0	102

*One student never took the AWPE in order to satisfy the ELWR or receive the proper placement.

UCR ELWR Status of New Freshmen

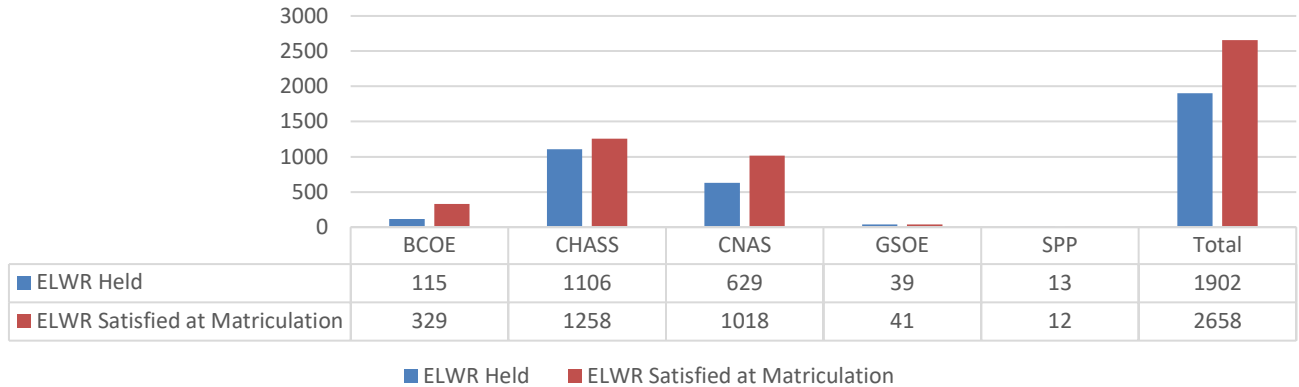


■ ELWR Held	2006	2007	2008	2009	2010	2011	2012	2013	2014	2015	2016	2017	2018
■ ELWR Satisfied	53%	52%	49%	47%	52%	47%	43%	46%	38%	39%	42%	38%	41%
	47%	48%	51%	53%	48%	53%	57%	54%	62%	61%	58%	62%	59%

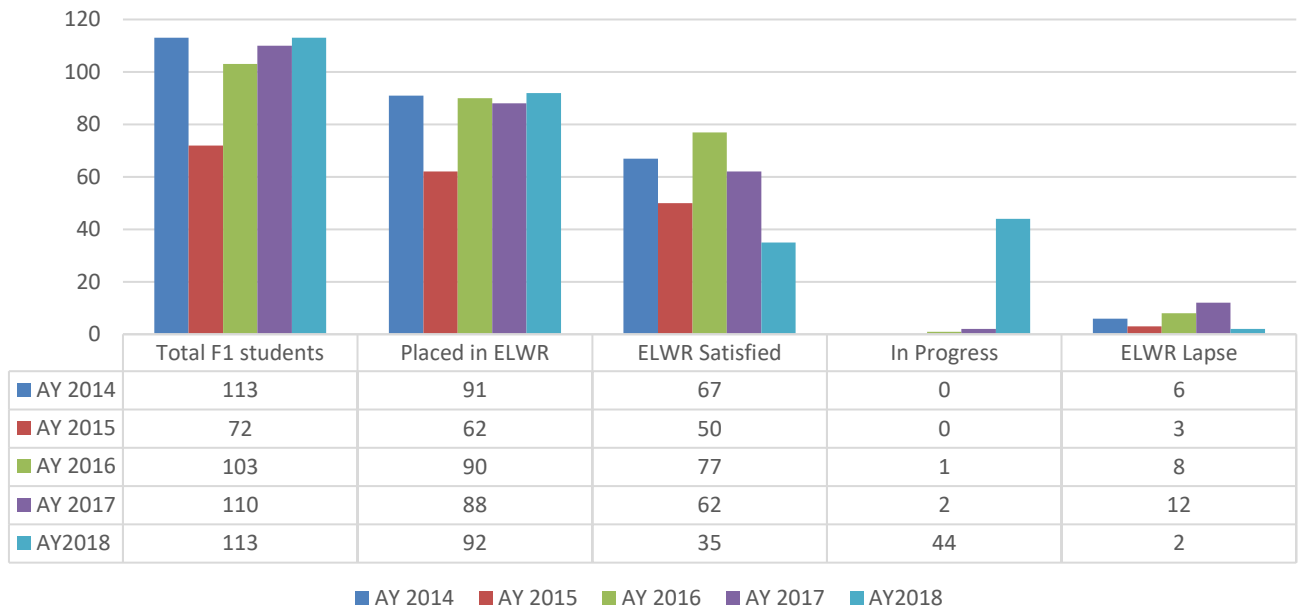
■ *ELWR Held* ■ *ELWR Satisfied*

ELWR Status by College

2018-2019



F1 Visa



	Total F1 students	Placed in ELWR	ELWR Satisfied	% of F1 ELWR currently satisfied	In Progress	Academically Dismissed or Withdrew	Withdrew (in good standing)	ELWR Lapse
AY 2014	113	91	67	74%	0	10	8	6
AY 2015	72	62	50	81%	0	2	6	3
AY 2016	103	90	77	86%	1	9	0	8
AY 2017	110*	88*	62	70%	2	10	2	12
AY 2018	113	92	35	49%	44	10	1	2

*Three F1 students left the university before receiving an official placement.